



Moberly School District

S.H.I.N.E. Sponsor Newsletter

Volume 2, Issue 1

2010-2011

Special points of interest:

- Moberly School District is Accredited with Distinction by the State of Missouri.
- Moberly School District is one of the very few district of its size in Missouri to have a comprehensive New Teacher Induction Program.

*“If everyone
is moving
forward to-
gether, then
success
takes care of
itself.”
~Henry Ford*

Welcoming our New Spartan Educators

On August 16th & 17th, 22 new teachers to Moberly School District attended a 2 day orientation to begin the school year. Over the summer, new hires received a welcome packet with information regarding Moberly attractions and information. Orientation was a time for getting to know one another, learning about district policies, expectations and general information for beginning the year. A bus tour of Moberly was conducted with entertaining tour

guides to narrate the voyage through the Magic City. Several local businesses contributed give away items, coupons, and information. New first year teachers spent time with their mentors and participated in training in a

model classroom setting, along with some technology training. The new teachers joined with the returning Moberly School District teachers to complete the remaining 4 days of teacher work days.



S.H.I.N.E. Business Sponsors

- Orscheln Industries
- Dr. Michael Berry, D.D.S.
- P.K. Weis Insurance Agency
- City Bank
- County Bank
- MACC Activity Ctr.
- Century 21-McKeown & Assoc.
- Bratcher’s Market
- Moberly Radiology & Imaging
- Valentine Insurance Agency, John Cochran
- Moberly Motor Company
- Lynn’s Country Floral & Gifts
- Farmers Insurance, Kyle McClain
- Moberly Parks & Recreation

MEET the NEW SPARTAN TEACHERS



This year, Moberly School District welcomed 22 new teachers to the district. New teacher inducted into the Moberly School District include:

North Park Elementary (K-2)

Hillary Bare-1st Grade Graduate of William Woods University, Hometown: Macon, MO
Cynthia Glenn-Special Education, Graduate of MU, Hometown: Higbee, MO

South Park Elementary (K-2)

Tina Miller-Kindergarten, Graduate of UCM, Warrensburg; Hometown: Chillicothe, MO
Christie Lewis-Counselor, Graduate of CMU, Fayette; Hometown: Harrisburg, MO

Gratz Brown Elementary (grades 3-5)

Matt Carlson-5th grade, Graduate of Truman State, Kirksville, Hometown: Parkville, MO
Kevin Morawitz-5th grade, Graduate of MU, Hometown: Columbia, MO
Chris Renner-Special

Education, Graduate of MU, Hometown: Columbia, MO

Hilary Myers-Computer Technology, Graduate of CMU, Fayette, Hometown: Fayette, MO.

Gina Kennison-3rd grade, Graduate of UCM, Warrensburg, Hometown: Moberly, MO

Middle School (6-8)

Jessica Freese-7th grade Science, Graduate of Alternate certification, Hometown: Rocky Comfort, MO

Lauren Byington-6th grade Comm. Arts, Graduate of ABCTE Certification, Hometown: Bourbon, MO

Anne Hunt-Special Education, Graduate of CU, Colorado, Hometown- Moberly, MO
Amanda Reed-Vocal Music, Graduate of CMU, Fayette, Hometown-Nashville, TN

Jessica Schmidt-8th grade Social Studies, Graduate of KU, Kansas, Hometown-Wichita, KS
Gretchen Carroll-8th grade Communication Arts, Graduate of UMKC, Hometown-Moberly, MO

High School(9-12)

Sandy Davidson-Math Graduate of UCM, Warrensburg, Hometown- Holden, MO

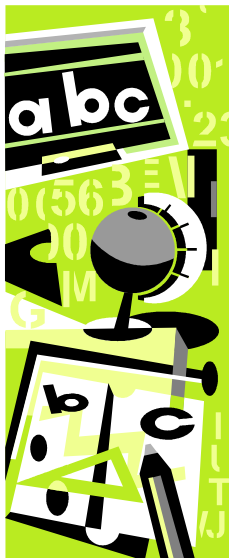
Joy Noorbakhsh-Comm. Arts, Graduate of Middlebury College, VT, Hometown: Mexico, MO

Kenya Fuemmeler-History, Graduate of U of Notre Dame, South Bend, IN, Hometown-Salisbury, MO

Mark Anderson-History, Graduate of MU Law School, Hometown-Warrenton, MO

Tracy Bottoms-MHS Asst. Principal, Graduate of NWMSU & William Woods, Hometown-Glasgow, MO

**THANK
YOU
S.H.I.N.E.
Sponsors!!!**



"Let us think of education as the means of developing our greatest abilities, because in each of us there is a private hope and dream which, fulfilled, can be translated into benefit for everyone and greater strength of the nation."

John F. Kennedy

Professional Development

Each month, the first year teachers meet for professional development. It is during this time that sharing of experiences take place and strategies are learned to take back and implement in the classroom. During the November monthly meeting, first year teachers met at the James Youth Building in Rothwell Park for a full day of professional development. Interactive learning included the opportunity to be outside, to enjoy the park.

Teachers collaborated with one another, learned cooperative learning activities, discussed research based lesson planning and goal setting and learned more strategies for classroom management. Throughout the year, the PD focus is on student achievement by focusing on student learning. Thank You Sponsors for helping make this great learning day possible!!.



Ways we say "THANK YOU"

The Moberly School District S.H.I.N.E. program is grateful to our sponsors that help to support the program. Your donation of money and resources are invaluable in helping the program maintain the high caliber and quality of support we provide. At each monthly meeting,

your name is displayed in table tents and reminders are given to support our sponsors. We recognize

sponsors at a school board meeting, on the new teacher link of the district website, and provide recognition each month in the newsletter.

Business sponsors are always welcome to visit a monthly meeting to share information about their business. This year an ad will placed in the local newspaper in recognition and thanks of the support.



Moberly School District Mission Statement

Create a safe environment that fosters mutual respect & responsibility. Inspire and value life-long learners. The "Spartan Way" is excellence for ALL!

Phone: 660-269-2680
Fax: 660-269-8519
E-mail: think@moberly.k12.mo.us

S.H.I.N.E. (Supporting,
Helping & Inspiring New
Educators) Program
Facilitator: Tara Link
920 KWIX Rd.
Moberly, MO 65270

Moberly School
District

www.moberly.k12.mo.us

Moberly School District New Teacher Induction Program

One goal set forth by the Moberly Board of Education was to recruit and retain highly qualified educators for Moberly School District. This led to the creation of the S.H.I.N.E. (Supporting, Helping, & Inspiring New Educators) program..

Established in the fall of 2008, the S.H.I.N.E program was created to provide a systematic support system primarily, but not limited to teachers with little or no prior teaching experience. Several key components include: opportunities for new

teacher's to observe experienced teachers, quarterly coaching sessions with the Induction Coordinator, an assigned mentor teacher in the same grade level or content



area, ongoing classroom observations or support conversations, opportunity for graduate credit hours, social networking, and monthly professional

development opportunities.

The program has expanded to become a 2 year program. Teachers remain a part of a cohort for two years and continue to be provided professional development opportunities and ongoing contact with the induction coordinator.

This is one of the only programs in the state of Missouri for a district of Moberly's size to offer such a comprehensive support system.

